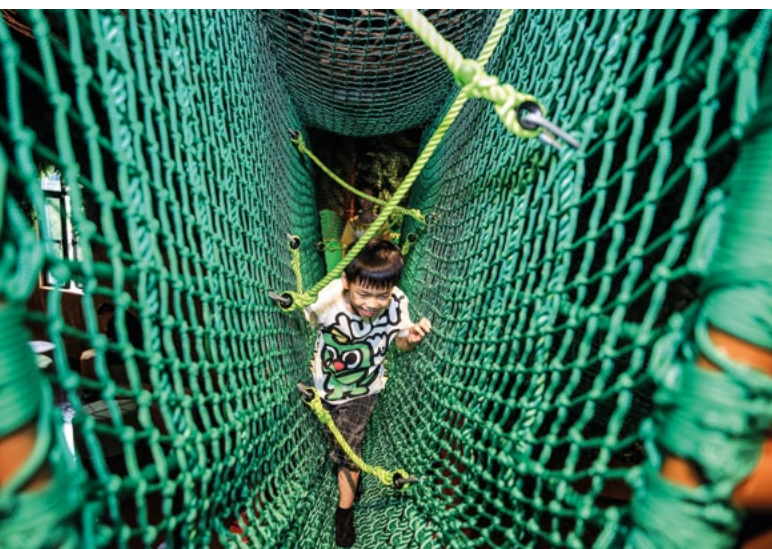


# WALLTOPIA

## ACTIVE ENTERTAINMENT

---

### Brands Overview





Walltopia Active Entertainment product line evolved naturally from our experience in the climbing wall industry and the natural human craving for play. We were driven by the desire to transform physical activity into amusing and purposeful play, suitable and entertaining for everyone, with no need of specific sport preparation and minimum equipment required for the participants. Providing versatile experience, in their core our products share one and the same goal. They help us get active and encourage us to spend more time with our family and friends in a meaningful, present way. That's what we call active entertainment.

*Walltopia is the world leader in the design and production of climbing walls. The company was founded in 1998 and to date has over 2000 projects in 80 countries on 6 continents.*

## OUR ACTIVE ENTERTAINMENT BRANDS



Fun Walls are climbing wall attractions for children and young adults that enhance cognitive, social and emotional skills through interactive challenges and team games.

### ROLLGLIDER

Rollglider is an aerial attraction driven by gravity and controlled by the participant's body movement. The experience feels like a mix of hang gliding, coaster ride and proximity flight in a safe and accessible environment.

### NINJA COURSE

Ninja Course provides a great workout for the whole body—challenging strength, endurance, agility and balance in a completely safe environment.

### CLOUD CLIMB

A cross between the classic playground and a maze, this unharnessed attraction allows 4 to 14-year-old kids to experience a unique feeling of freedom; much like jumping from cloud to cloud.

### ROPES COURSE

Ropes Courses challenge flexibility, balance and strength in a thrill-boosting way, while ensuring maximum safety in relation to industry safety standards.

### ADVENTURE TRAIL

Adventure Trail is an elevated playground that allows participants to experience the thrill of heights without the need of a harness. Its tunnels of nets and obstacles are a great way to diversify any entertainment center in a safe environment.

### ADVENTURE HUB

Adventure Hub incorporates a variety of active entertainment attractions under one roof through custom theming to deliver the ultimate adventure experience. It is designed to fit customers' expectations for high people throughput, low maintenance and to promote repeatable visits.

### TREE COURSE

The Tree Course is a ropes course with outstanding design. Unlike regular ropes courses that put the focus mainly on functionality, the Tree Course is also designed to captivate visitors' attention.

### NET MAZE

Net Maze offers a modular design with height variation options and various obstacles, creating an elevated playground that makes kids feel like they are in a never-ending maze of fun.

### ZIPLINES

Zip Lines give a sense of flying: among trees, above waters and canyons or in a shopping mall atrium and no matter where, they make the adrenaline levels go up.

### CAVES

Caves turn free space into an adventurous and diverse amusement area and are a great way to experience a much realistic cave walk combined with educating elements.

### SLIDES

Whether straight or twisted, open or closed The Slide is a facility for having fun, which can be placed as an entry or exit of other attractions or can be placed as a stand alone structure.

### TRAMPOLINES

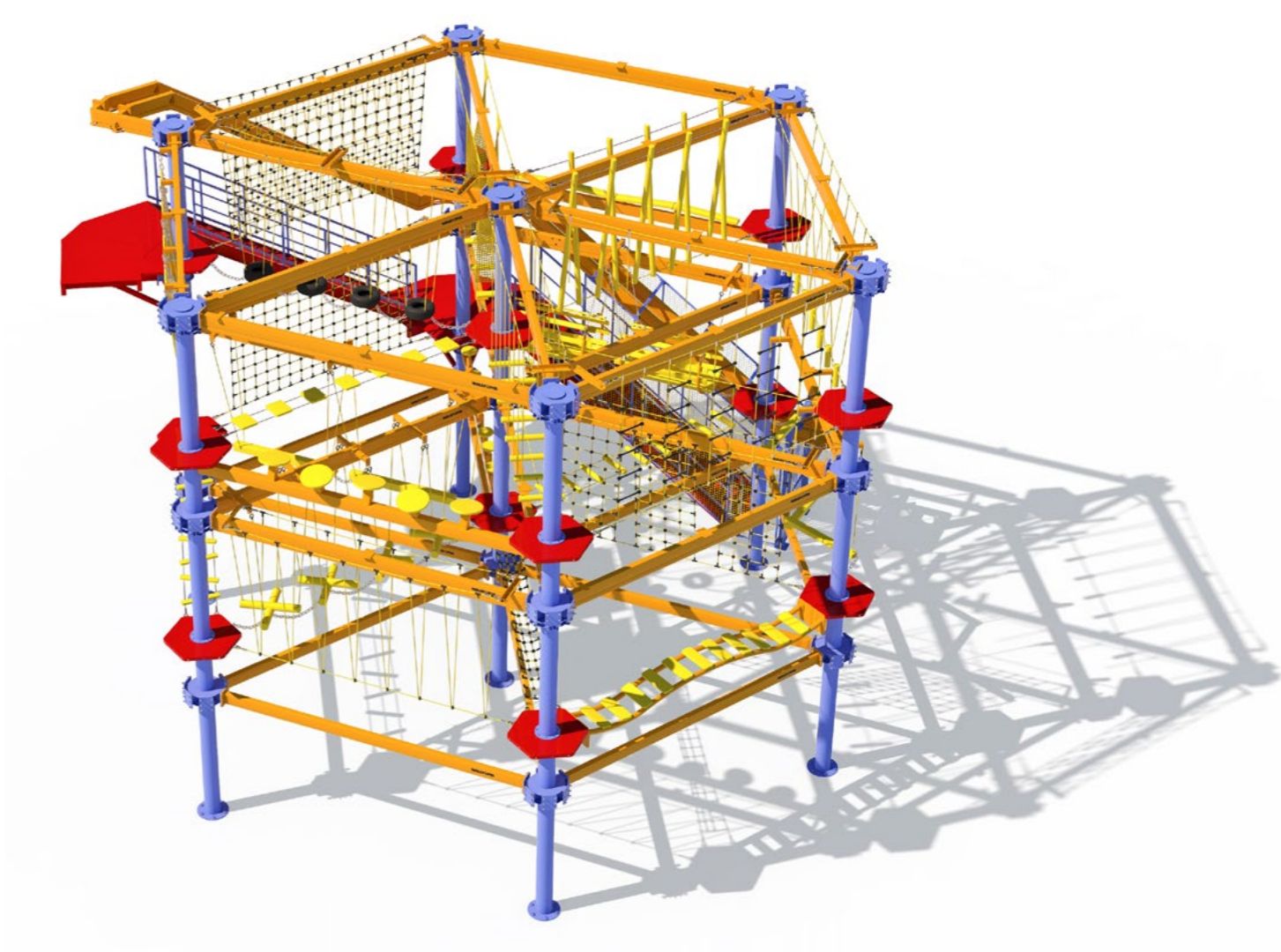
Walltopia Trampolines are unharnessed activity for the whole family. It is a multi-activity playground suitable for all age groups.



**WALLTOPIA**  
ROPES COURSES

Walltopia Ropes Courses challenge flexibility, balance and strength in a thrill-boosting way, while ensuring maximum safety in conjunction with the industry's safety standards. All our ropes courses offer a wide range of difficulty levels that appeal to both children and adults. The brand's attractions are appropriate for participants as young as five years old.

**SAMPLE PROJECT**



Components	Structure	Area	Height	Capacity	Staff	Additional Requirement
Belay system: multidirectional continuous  Steel platforms  24 various obstacles  Can accommodate attractions such as Rollglider, Zip line and free fall devices	Self-standing duplex coated steel structure (hot dip galvanization & paint)	120 m <sup>2</sup> 1292 ft <sup>2</sup>	7,3 m 24 ft	42 people at a time	2	Personal protective equipment for all participants and staff



# SAMPLE PROJECT



## WALLTOPIA TREE COURSE

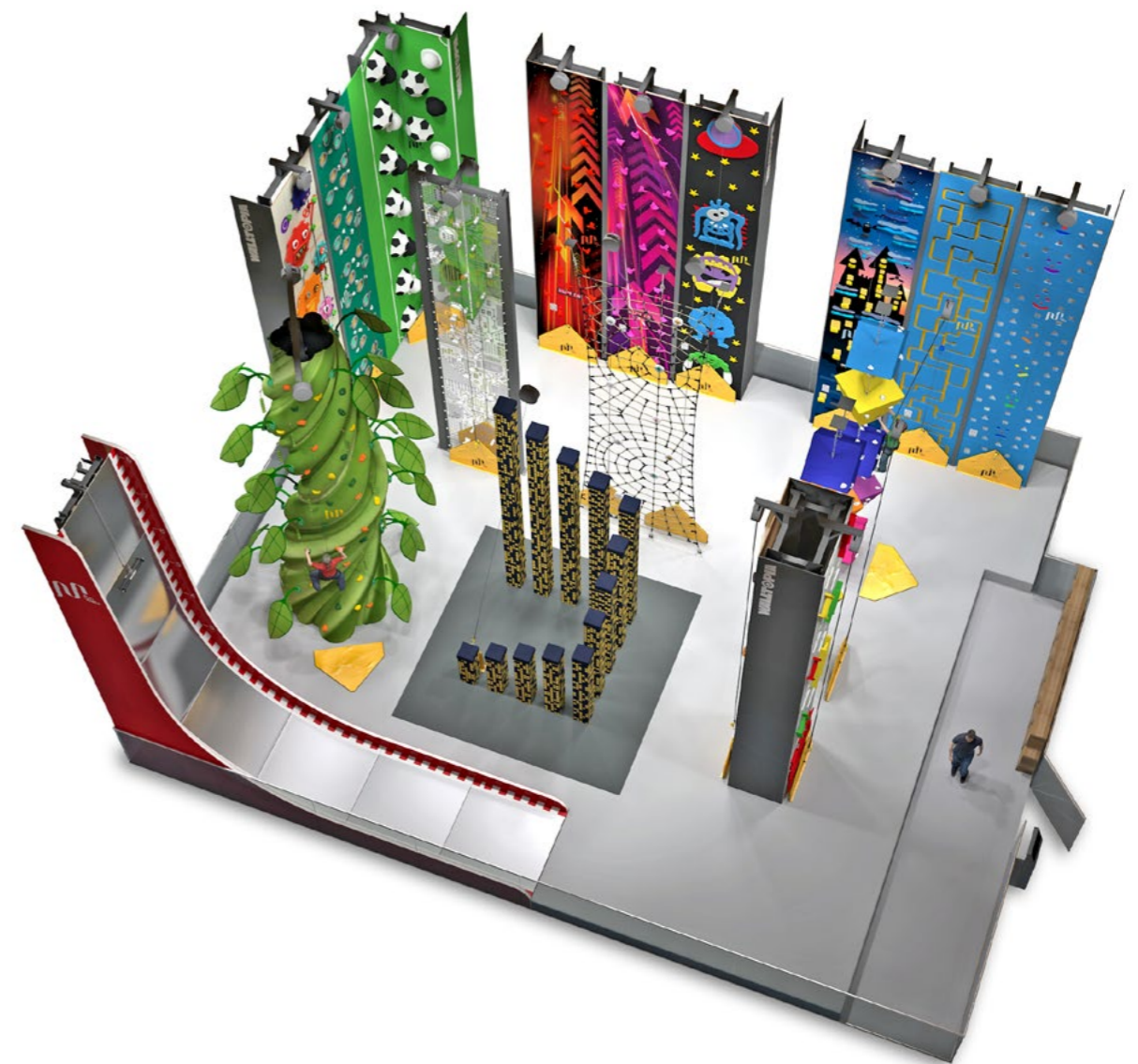
The Tree Course is a ropes course with outstanding design. Unlike regular ropes courses that put the focus mainly on functionality, the Tree Course is also designed to captivate visitors' attention. It combines a great physical challenge with an immersive experience no other ropes course can rival.

Components	Structure	Area	Height	Capacity	Staff	Additional Requirement
<p>Belay system: multidirectional continuous</p> <p>96 various obstacles</p> <p>Can accommodate attractions such as Rollglider, Zip line and free fall devices</p>	<p>Self-standing duplex coated steel structure (hot dip galvanization &amp; paint)</p> <p>Scalable structure in 1, 2 or 3 levels configurations</p>	<p>Footprint 73m<sup>2</sup> (786 ft<sup>2</sup>)</p> <p>Aerial footprint 570m<sup>2</sup> (6,150 ft<sup>2</sup>)</p>	<p>26 m</p> <p>85 ft</p>	<p>Up to 240 ppl at a time (incl. deck)</p>	<p>4 - 6</p>	<p>Personal protective equipment for all participants and staff</p>



Fun Walls are interactive climbing walls which develop kids' social, cognitive and physical skills. With different themes, sizes and over 70 models available for both indoors and outdoors, they fit in a wide variety of venues. Fun Walls are the ideal attraction to bolster returning customers with their diverse climbing experiences and low staffing needs.

## SAMPLE PROJECT



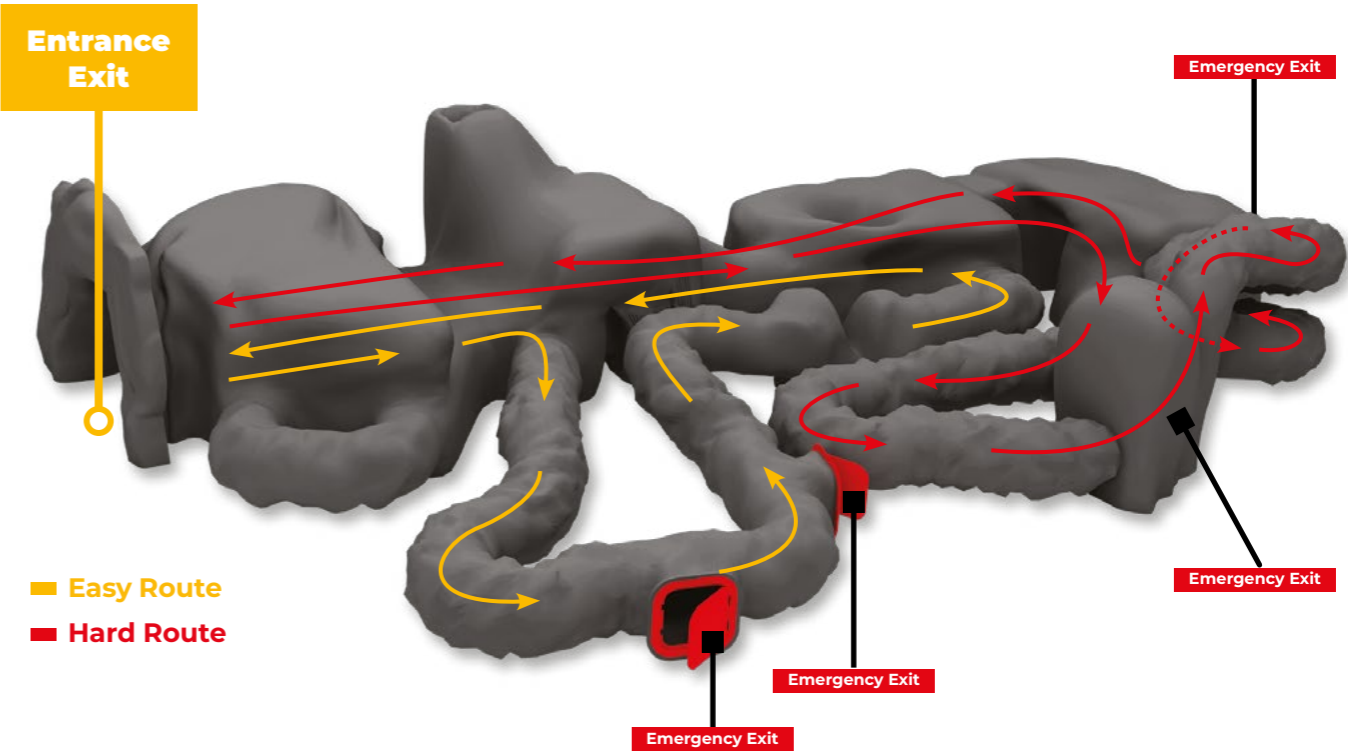
<b>Main information</b>	Floorspace: 199 m2	Staff required: 4 (3 with self-belay)
	Number of climbing lines: 21	Applicable standard: EN 12572 / EN 1991
<b>Additional information</b>	Number of Fun Walls: 17	Duration of one session: 40mn
	Min. ceiling height: 6.75 m (22.1 ft)	Recommended instant capacity: 32 ppl.
<b>Add-ons</b>	Briefing area: 20 m2 (215.3 ft2)	Hourly throughput: 48 ppl. per hour
	Autobelays: 20	Flooring: 150 m2 (1614.6 ft2) OML
	Safety gates: 20	
	Self-belays: 20	



**WALLTOPIA**  
ARTIFICIAL CAVES

Caves realistically recreate the experience of caving, featuring actual rock formations - stalagmites, stalactites, tunnels and boulders. Our caves also contain interactive educational games that introduce kids to speleology, geology and palaeontology. Our caves are a great way to transform unused space into an edutainment area and generate a new revenue stream.

**SAMPLE PROJECT**



Components	<div><div><ul style="list-style-type: none"><li>• Ventilation system</li><li>• LED lightning</li><li>• CCTV</li><li>• Sound system</li></ul></div><div><ul style="list-style-type: none"><li>• Physical games</li><li>• Educational games</li><li>• Theming with authentic cave features: stalactites, stalagmites, fossils, lava</li></ul></div></div>	
Structure	<div><ul style="list-style-type: none"><li>• Rock realistic surface casted from real formations</li><li>• Fire Retardant fiberglass panels with reaction to fire classification B - s1, d0, EN 13501-1:2018 standard</li><li>• Rubber floor</li></ul></div>	
Footprint	165 m² (1776 ft²)	
Operational Length	86 m (282 ft)	
Capacity	35 ppl at a time	
Staff	Unguided caving min. 2	Guided caving 2 staff members per visitor group
Additional Requirements	Personal Protective Equipment for all participants & staff (helmets, knee pads, torches)	



credits: phaeno, Janina Snatzke



## CLOUD CLIMB by WALLTOPIA

Cloud Climb is a little gem in our portfolio—especially designed for the little ones. A cross between the classic playground and a maze, this unharnessed attraction allows 4 to 14-year-old kids to experience a unique feeling of freedom; much like jumping from cloud to cloud. Cloud Climbs are available in custom-made and standard models.

## WALLTOPIA ADVENTURE TRAIL

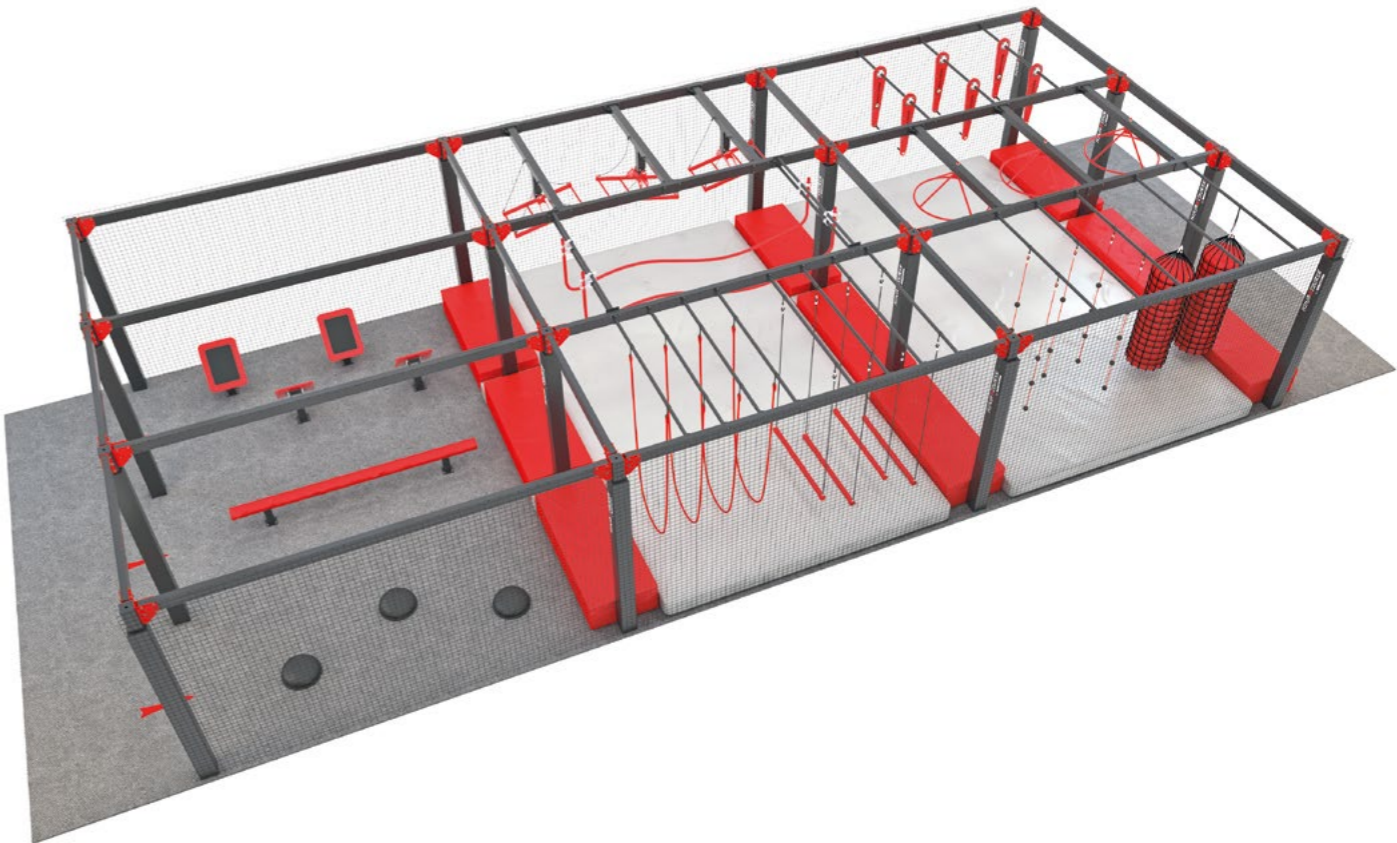
Walltopia's Adventure Trails is an elevated playground that allows participants to experience the thrill of heights without the need for a harness. Its challenging tunnels of nets and obstacles are a great way to diversify entertainment centers and deliver unique emotions in a safe environment.



**NINJA COURSE**  
by **WALLTOPIA**

Ninja Course provides a great workout for the whole body—challenging strength, endurance, agility and balance in a completely safe environment. Each Ninja Course has a modular construction—modules & obstacles can be easily added, removed, rearranged and modified to accommodate various footprints.

**SAMPLE PROJECT**



Configuration	3 parallel lanes with 9 obstacles
Flooring	Foam-padded mat 20 cm (7.9 in) + Carpet bonded foam 3.5 cm (1.35 in)
Dimensions	7.9 x 20.9 m (25.8 x 68.4 ft)
Footprint	164 m² (1765 ft²)
Capacity	Up to 90 ppl/h
Staff	1 staff member required



**ROLLGLIDER**  
a brand of **safety**  
ENGINEERING

The Rollglider, a brand of Safety Engineering, is an aerial roller coaster-zip line, inspired by the dream of free flying in a completely safe environment. The flight is not only enjoyed by thrill-seekers but also by people who crave a new experience. Each Rollglider we create is unique with its custom design and with the Extreme options featuring a speed of up to 50km/h.

## SAMPLE PROJECT

An Extreme Rollglider, integrated with a Ropes Course and a climbing wall. The ride features high speed and exciting track elements as well as a trolley retraction and smaller platforms that make it quick and easy to operate.



Track length	Capacity	Speed
220 meters	Up to 120 ppl/h	Up to 35 km/h

Components	Start/end platforms integrated with the ropes course Rollglider track	Start/end platforms integrated with the ropes course Rollglider track
Structure	Suspended	
Staff members	Minimum 2 people	
Safety zones	At least 5 m from the track to any obstacles below At least 2 m on each side of the track	



## WALLTOPIA ZIPLINES

Walltopia Ziplines are a breathtaking attraction for thrill-seekers of all ages and experience levels. Suitable for both urban and natural settings, Walltopia Ziplines have low operating costs and represent a perfect addition to any facility looking to boost revenue

## WALLTOPIA SLIDES

Whether straight or twisted, open or closed The Slide is a facility for having fun, which can be placed as an entry or exit of other attractions such as the Cloud Climb, Adventure Trail or Elevated Playground or can be placed as a stand alone structure. Adding The Slide to any other attraction provides a fresh and joyful experience.



## WALLTOPIA ADVENTURE HUB

The Adventure Hub is a structure which can combine any of Walltopia's Active Entertainment attractions into a single build. It is the embodiment of Walltopia's 25 years of experience as attraction manufacturer and experience maker. It offers multiple business opportunities, streamlined operations, great safety levels and exciting theming options.



## WALLTOPIA NET MAZE

Net Maze offers a modular design with height variation options and various obstacles, creating an elevated playground that makes kids feel like they are in a never-ending maze of fun.



# WALLTOPIA



OVER 2000 PROJECTS  
IN 80+ COUNTRIES ON 6 CONTINENTS

---

Founded in Bulgaria in 1998, Walltopia is a world leader in the Climbing and Adventure & Leisure industries. The company started out with the purpose of designing and manufacturing the most advanced climbing facilities in the world.

Our passion for science, technology and our obsession with excellence and safety, made us a leader and top expert in the Climbing and Active Entertainment industries.

We pride ourselves with our highly complex projects that always deliver expected results – starting with the design, moving on to the installation and finally – the certification.

Today we have the largest portfolio of classic and novel attractions that combine fun and entertainment with healthy doses of adrenaline for people of all ages. With sales offices in the USA, China and head office in Sofia, Bulgaria, and four production plants employing more than 500 people, to this day, we have produced over 2000 projects in 80+ countries and on 6 continents.

Our products are installed across adventure parks, amusement parks, shopping malls, gyms, recreational areas, ski resorts, schools and universities, hotels, and more.

**WALLTOPIA**  
TRAMPOLINES

Walltopia Trampolines are unharnessed activity for the whole family. It is a multi-activity playground suitable for all age groups.

**LET'S TALK ABOUT YOUR PROJECT**

Contact us at [adventure@walltopia.com](mailto:adventure@walltopia.com)  
or visit [walltopia.com](http://walltopia.com)